

1. Taberna at Herculaneum



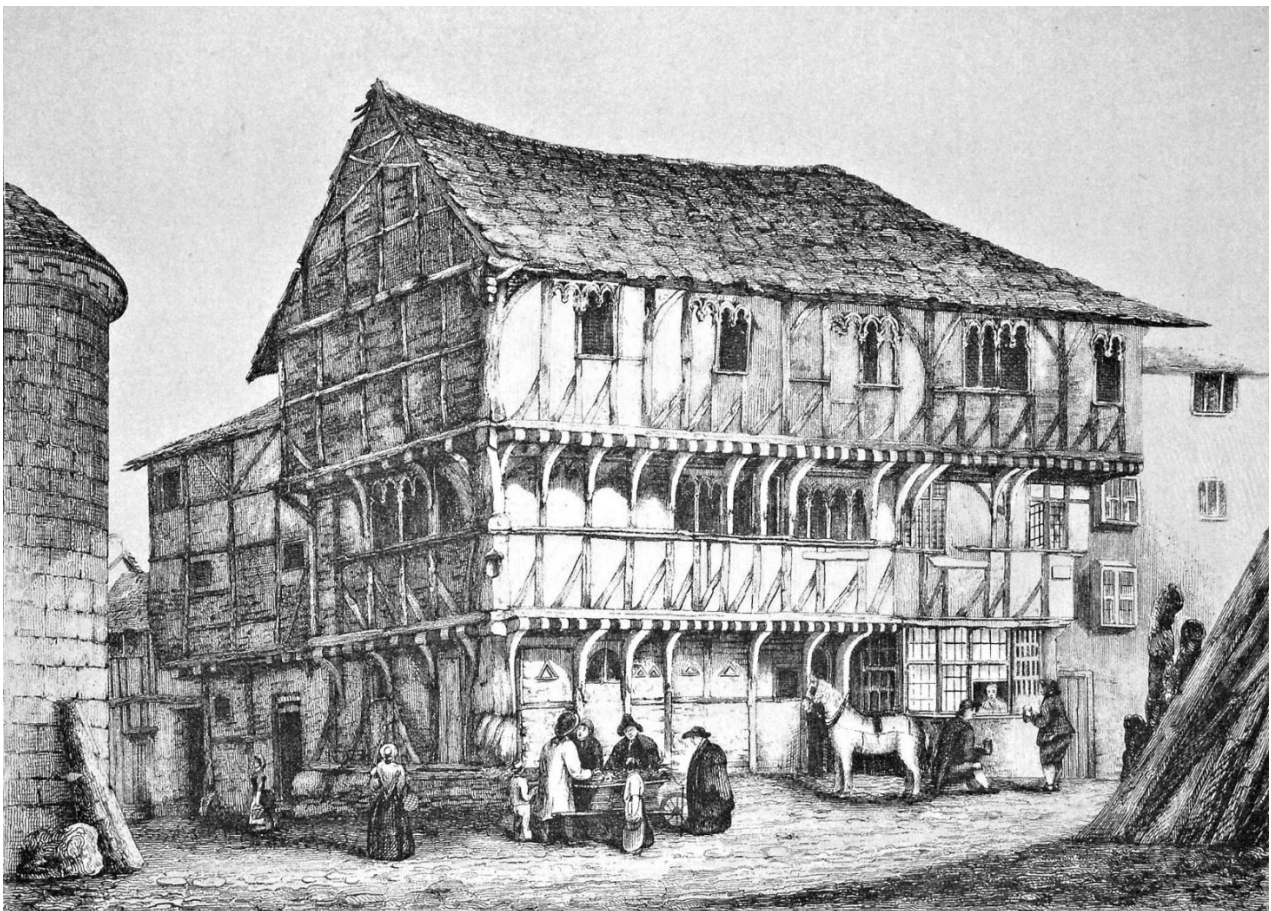
2. The Stone House



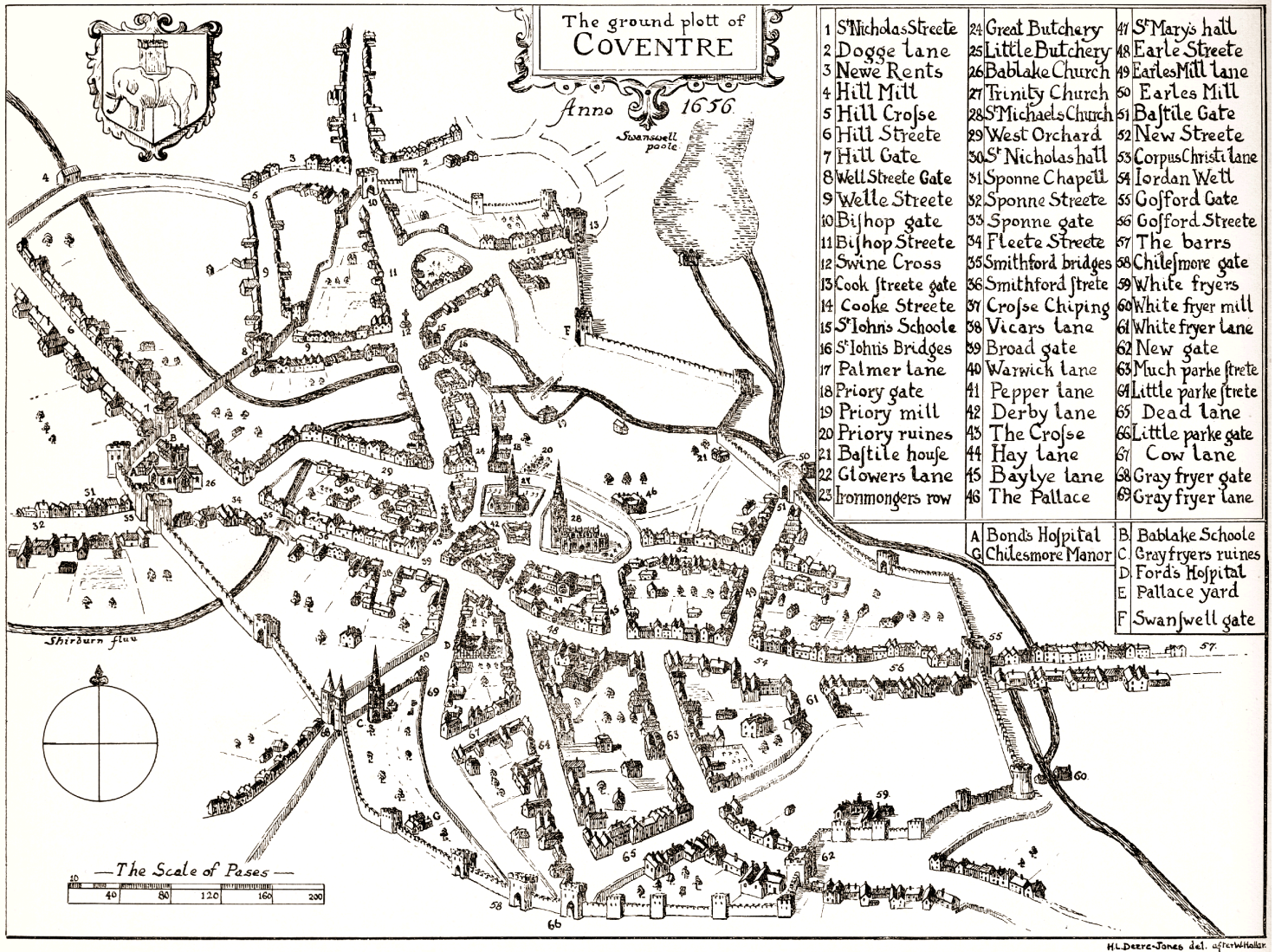
3. Doom painting in Holy Trinity church



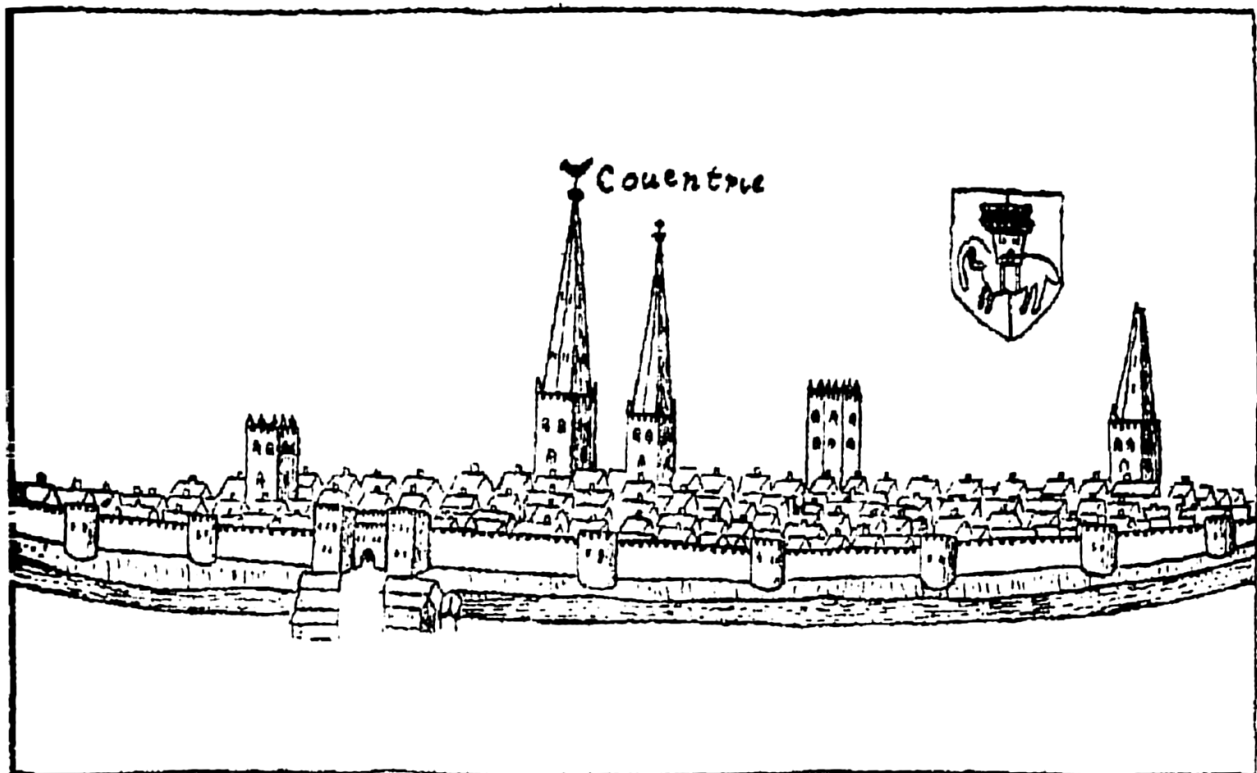
4. Pilgrims' Rest



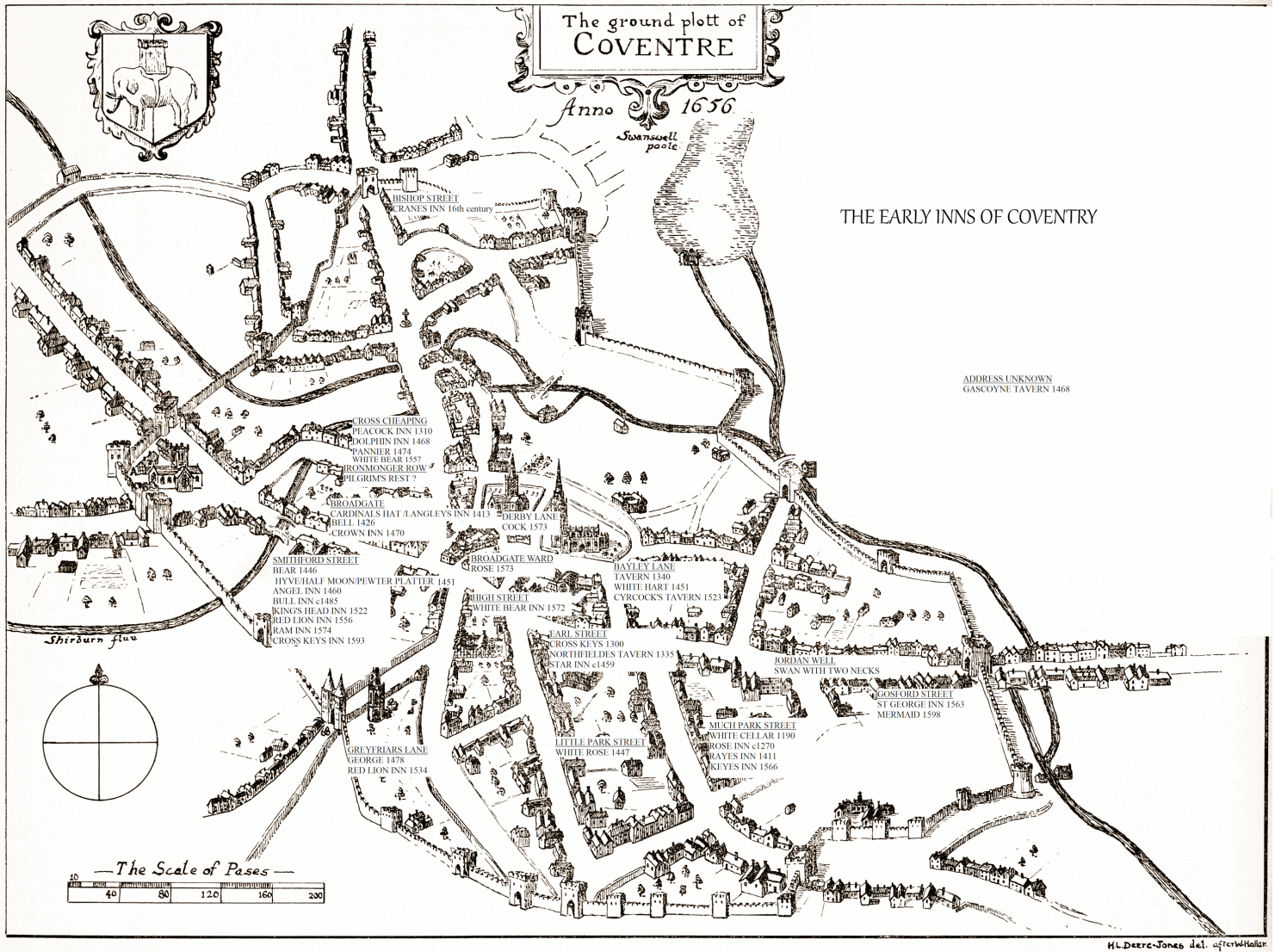
5. Hollar map



6. Hollar view of Coventry



7. Early inns of Coventry



Craven Arms Hotel.



FRONT VIEW.
HIGH STREET,
COVENTRY.

1880.

CURTIS AND BEAMISH, COVENTRY.

Craven Arms Hotel.



EAST VIEW.

HIGH STREET,

COVENTRY.

1880.

CURTIS AND BEAMISH, COVENTRY.

10. Mayor's Parlour



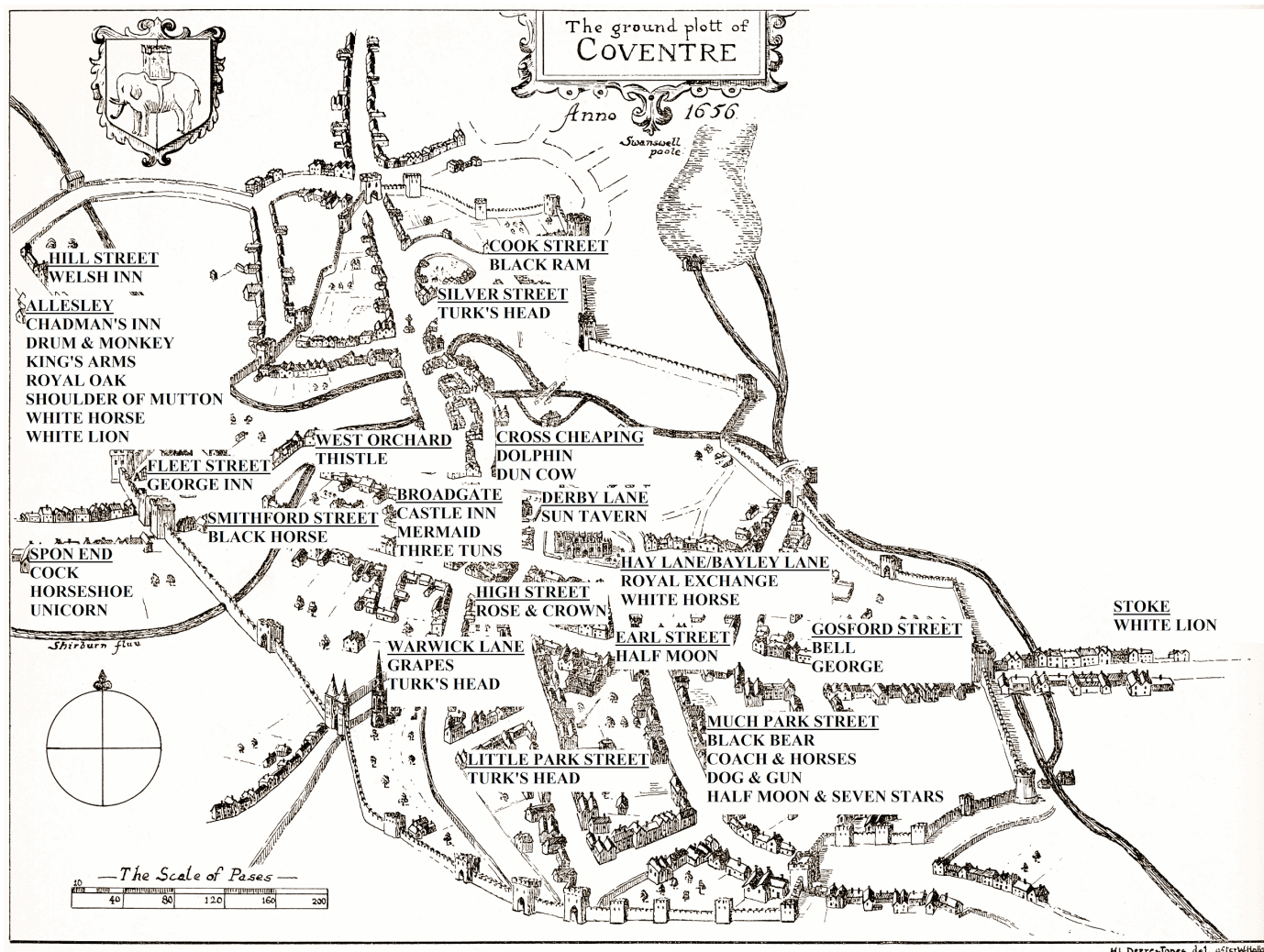
11. Swanswell House



12. Palace Yard

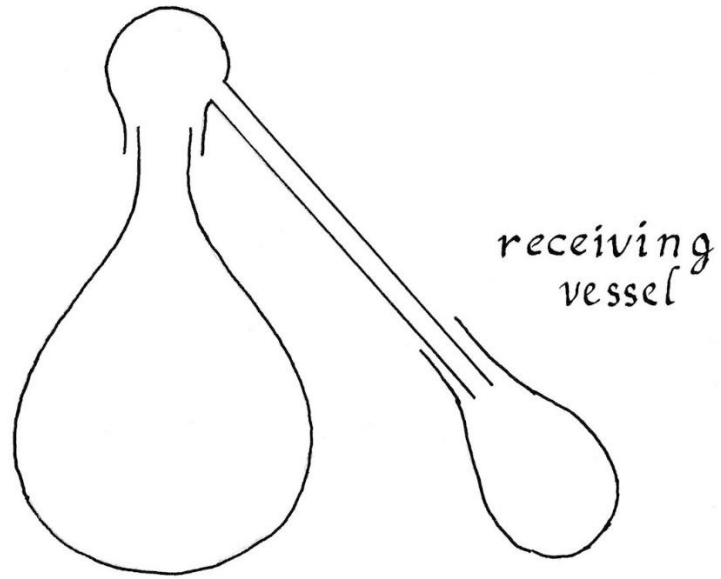


13. Inns first recorded in the Seventeenth Century



14. An Alembic Still

cap or ambix

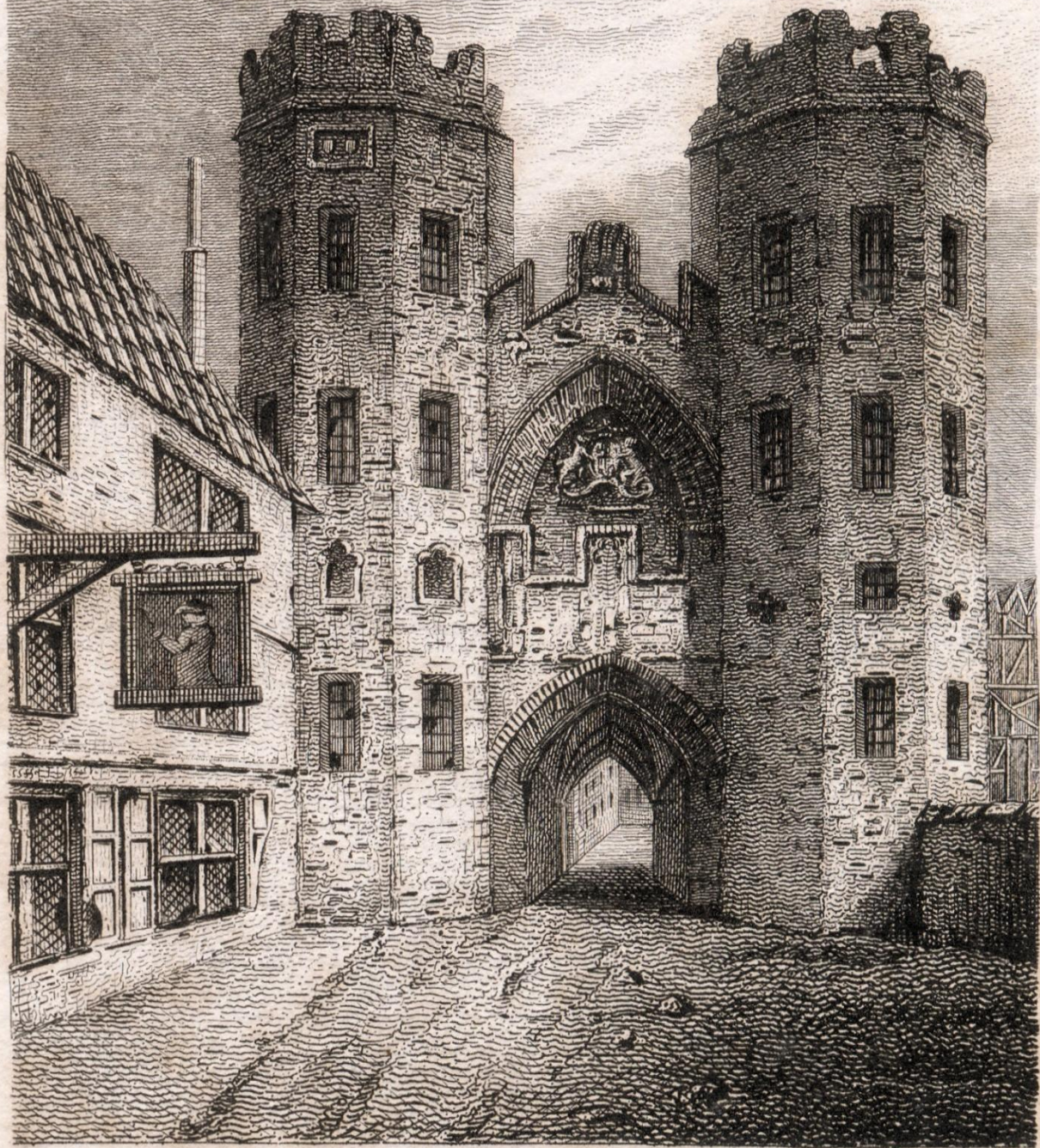


pot or curcurbit

An alembic still

15. Five Ways Tavern, Harnall Lane, with Weaver's Topshop



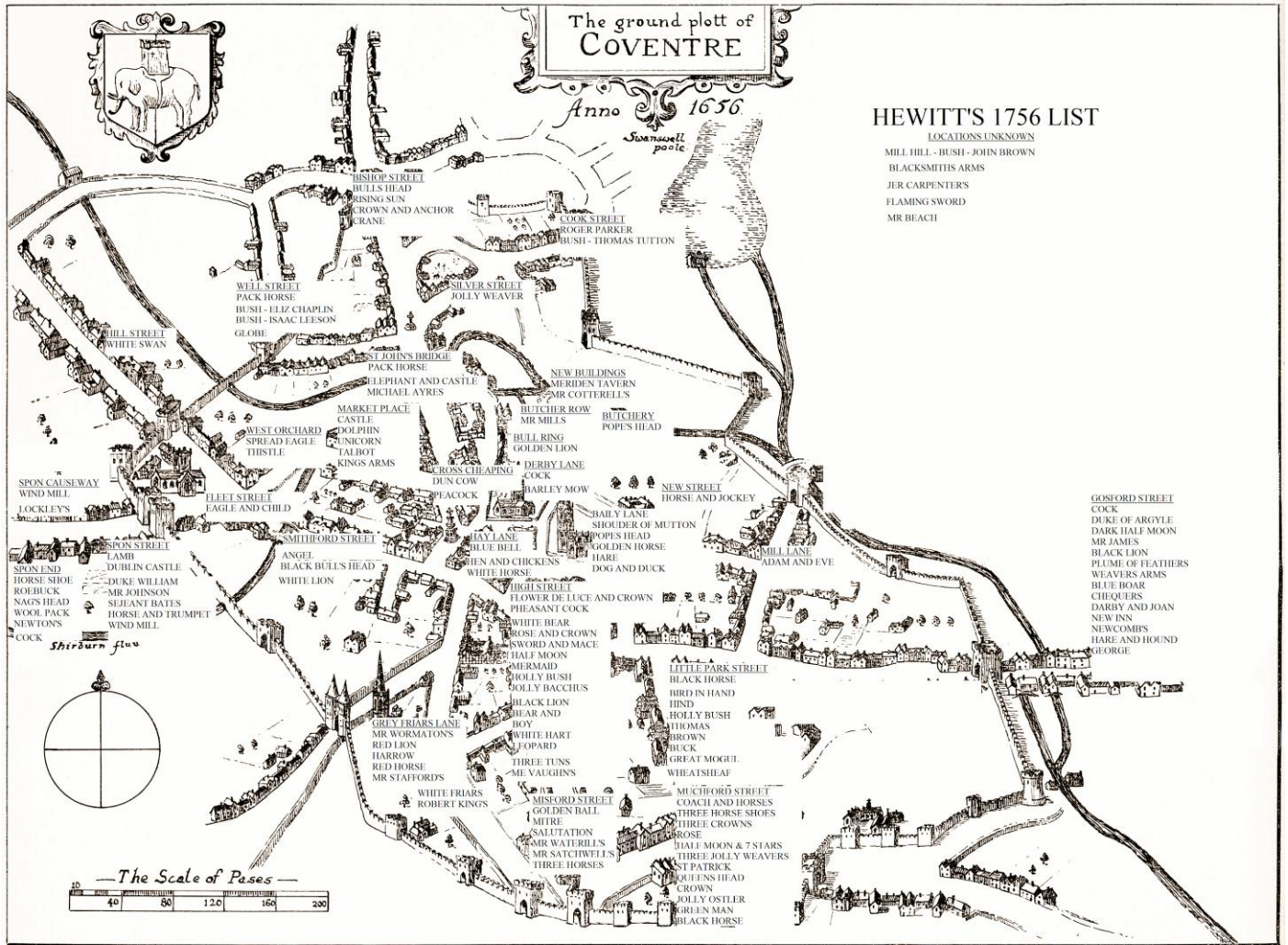


Engraved by J. Greig from a Drawing by J. Smith for the Antiquarian Itinerary. —

Spon Gate Coventry.

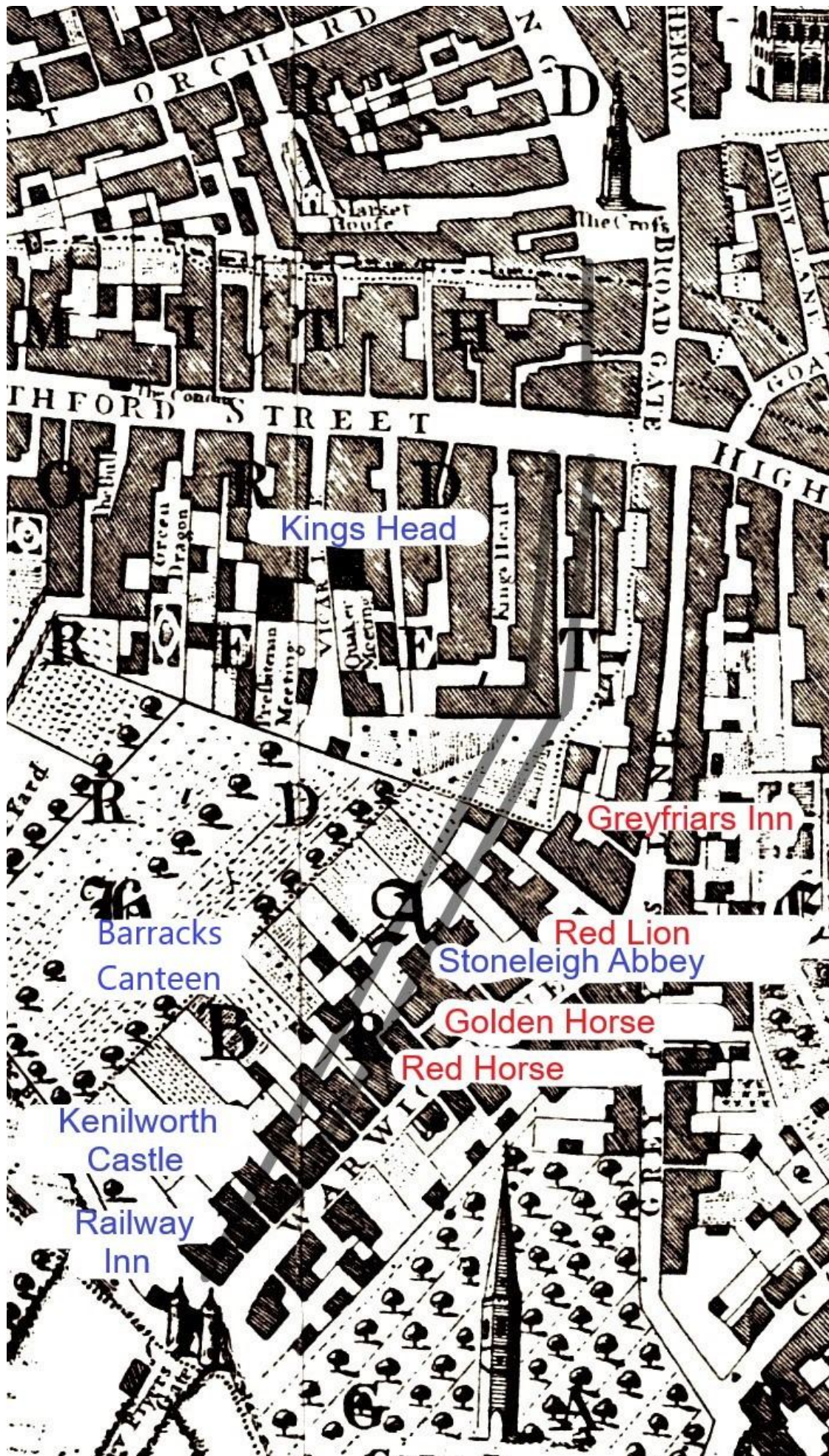
Published for the Proprietors July 1817 by W Clarke New Bond Street.

17. Hewitt Billets in 1756



18. Old Tower Inn, Cook Street





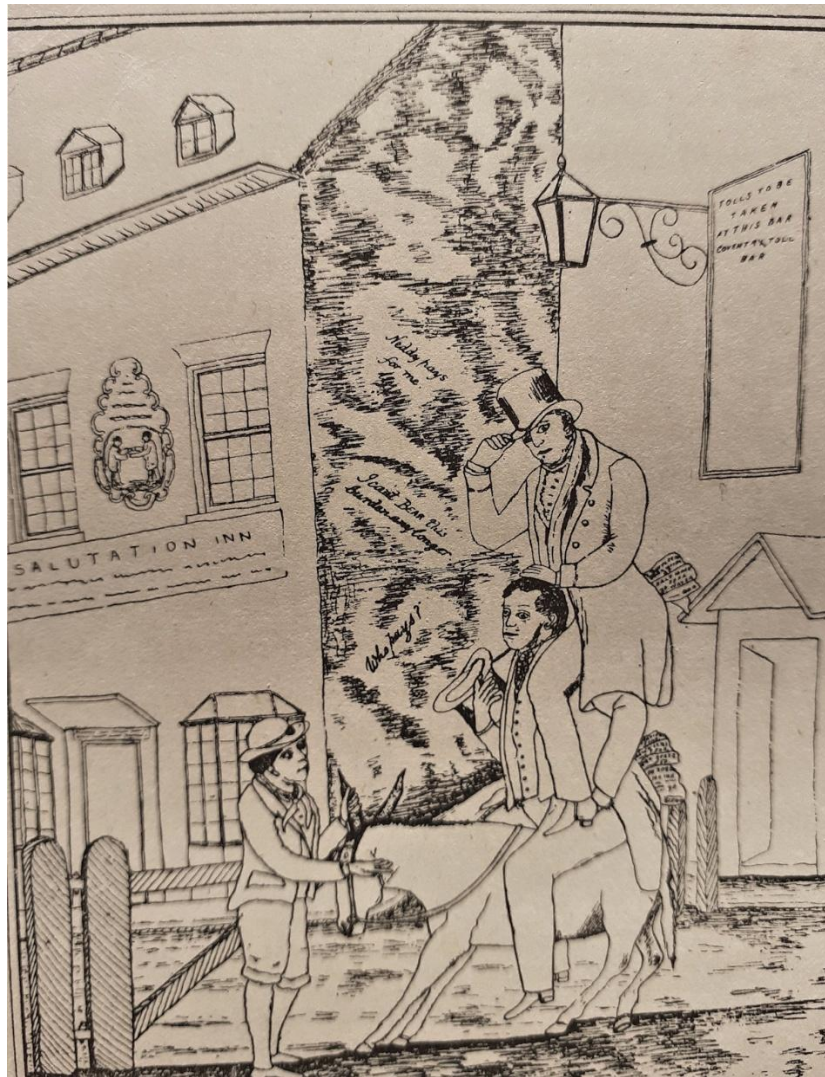
20. Castle Inn, Broadgate



21. City Hotel, King's Head and Shop, 1812



22. Salutation Inn



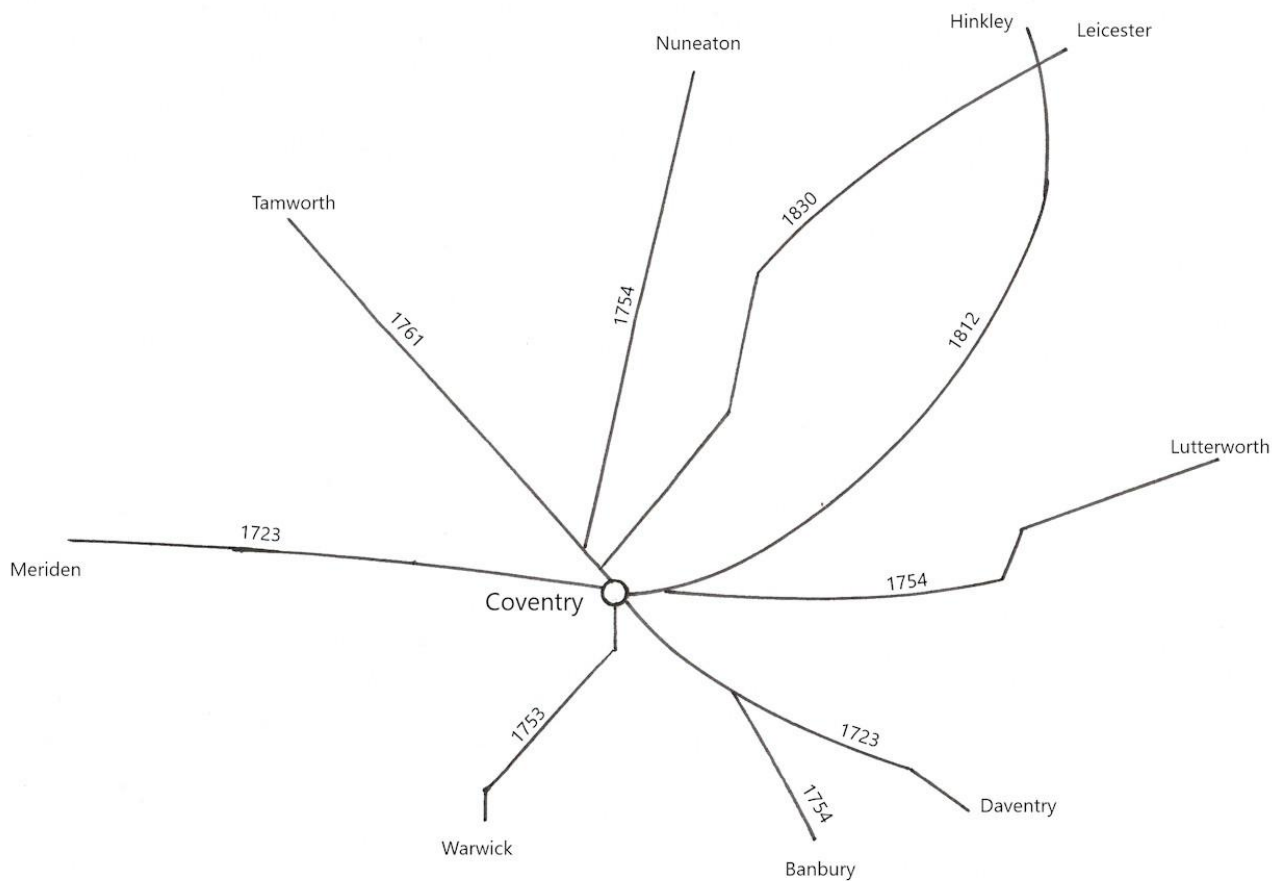
23. Bull Inn, Smithford Street



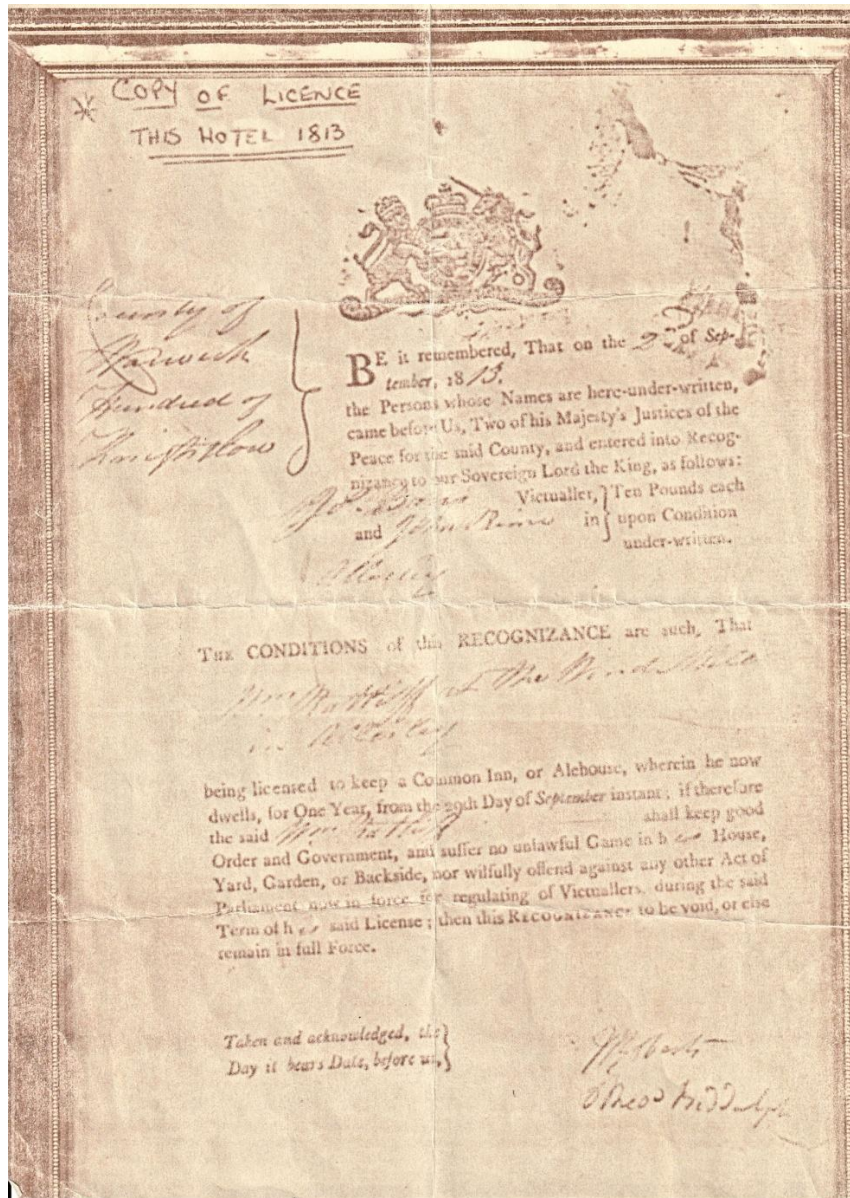
24. Inns in 1748



25. Coventry Turnpikes



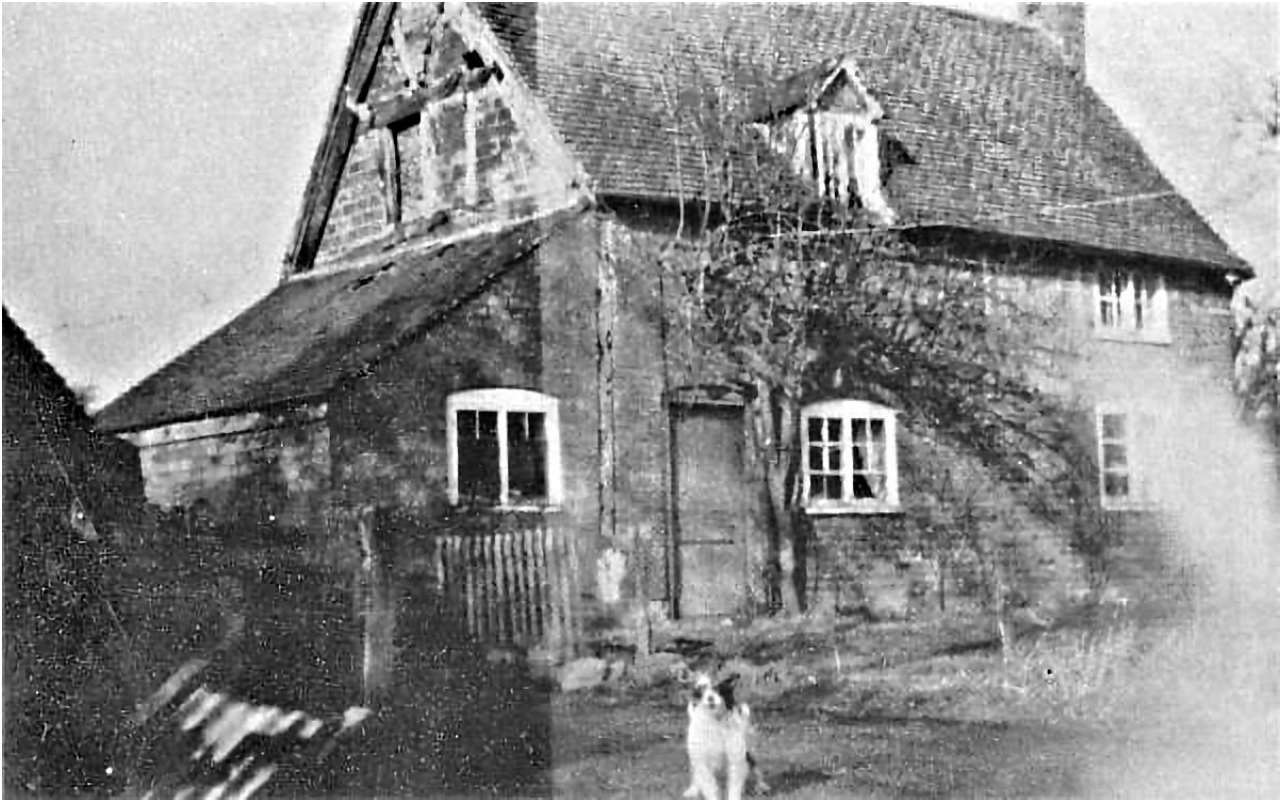
26. Windmill License 1813



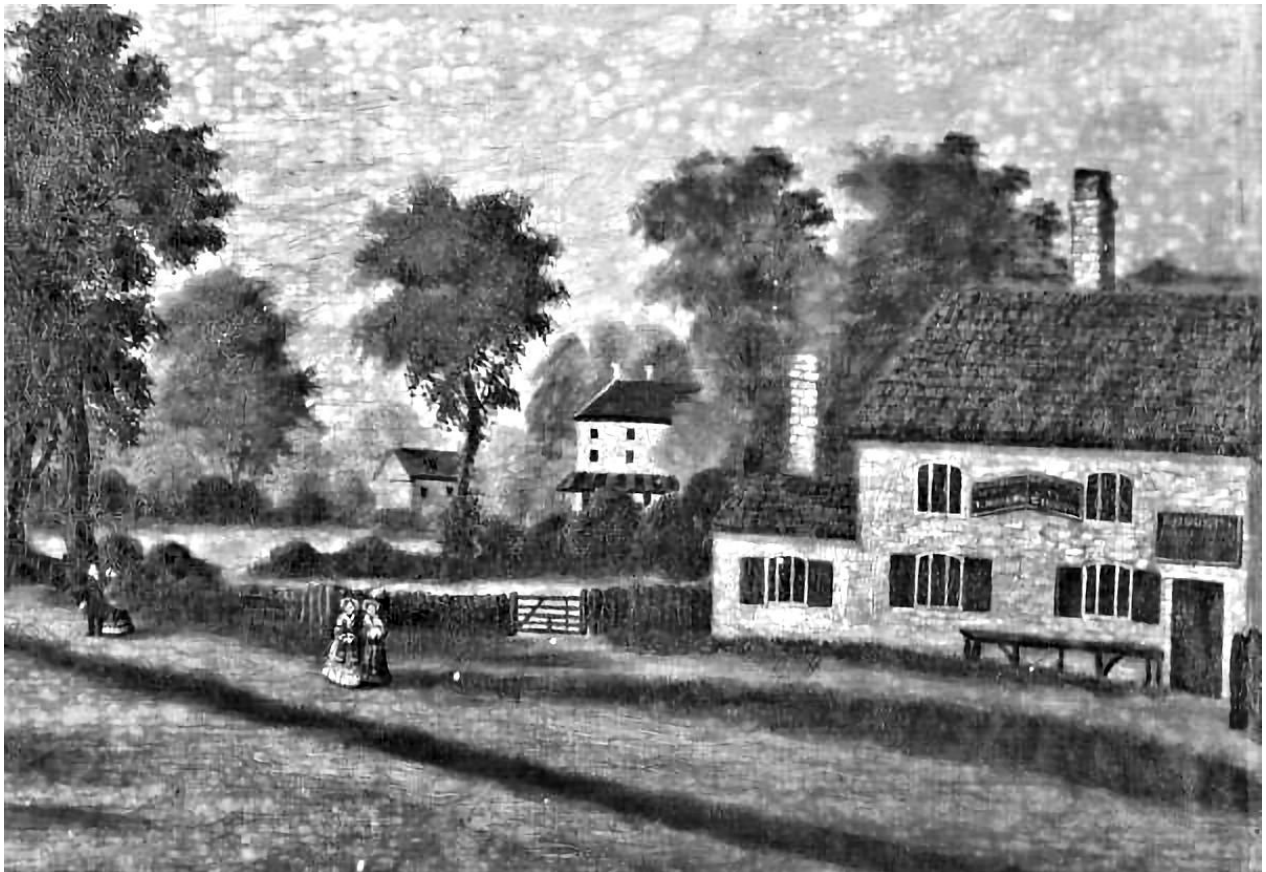
27. Three Horse Shoes, Foleshill



28. Drum and Monkey



29. White House, Kenilworth Road



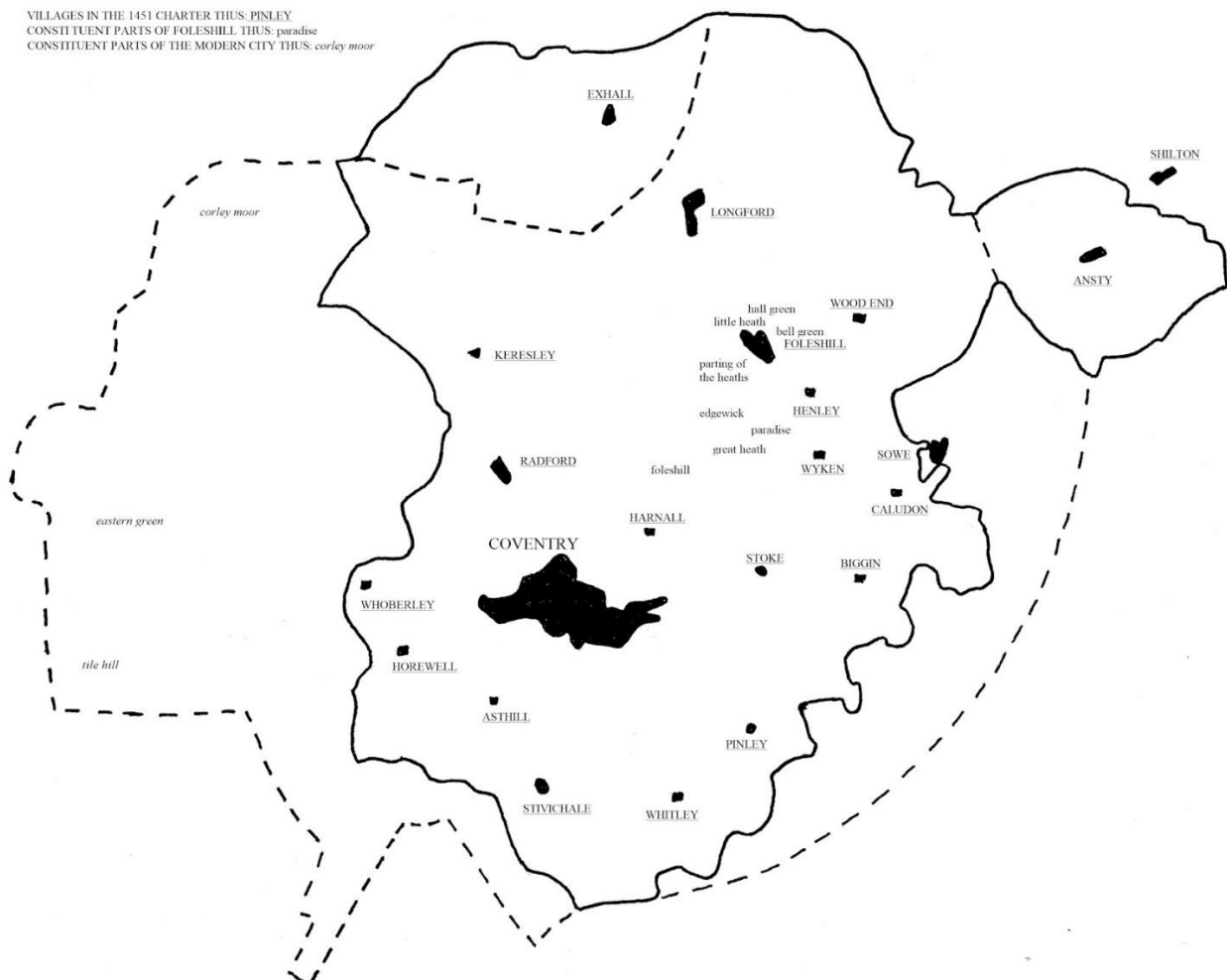
30. Seven Stars, Whitley

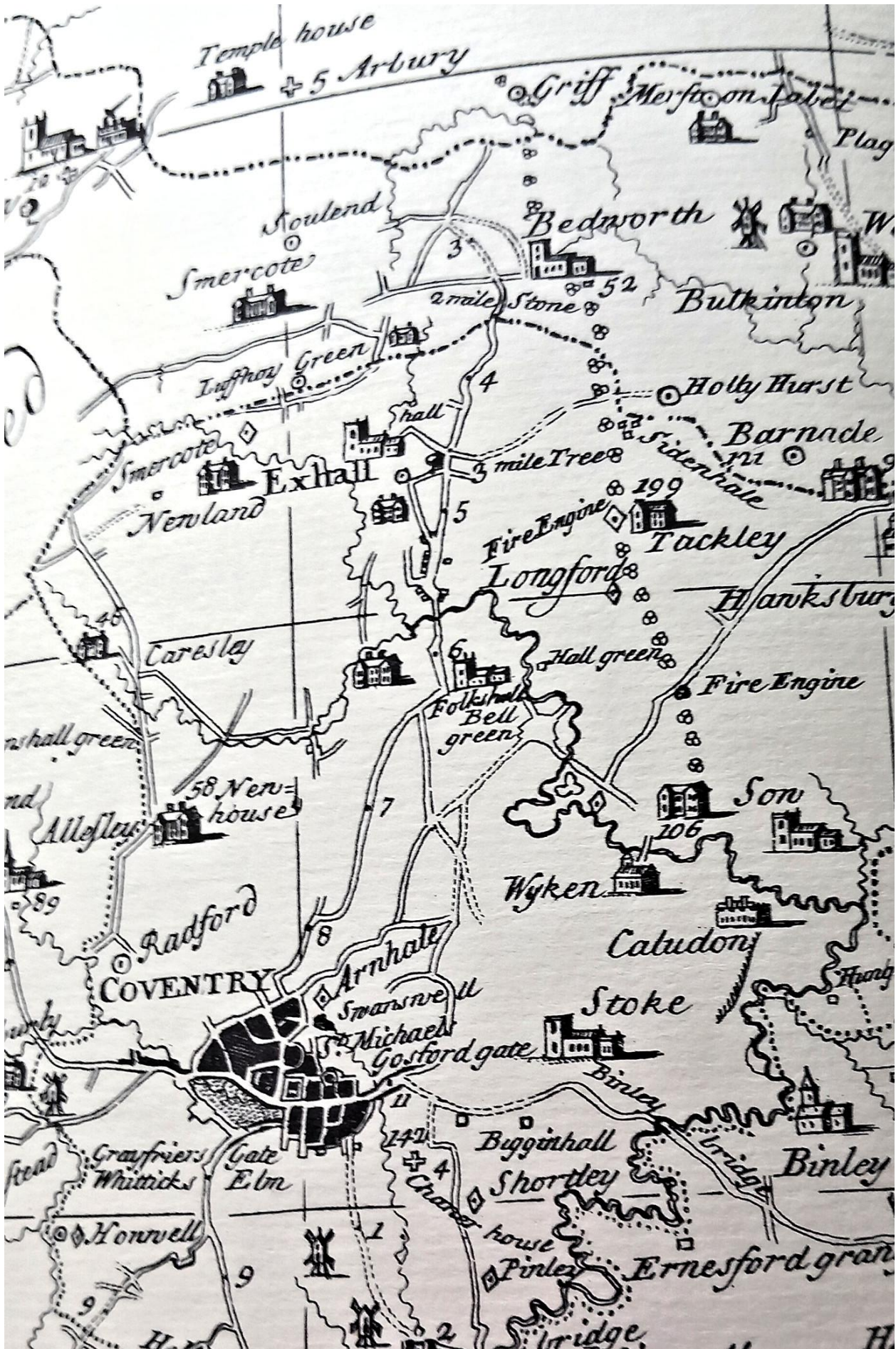


31. County of Coventry

THE COUNTY OF THE CITY OF COVENTRY

VILLAGES IN THE 1451 CHARTER THUS: PINLEY
CONSTITUENT PARTS OF FOLESHILL THUS: paradise
CONSTITUENT PARTS OF THE MODERN CITY THUS: corley moor



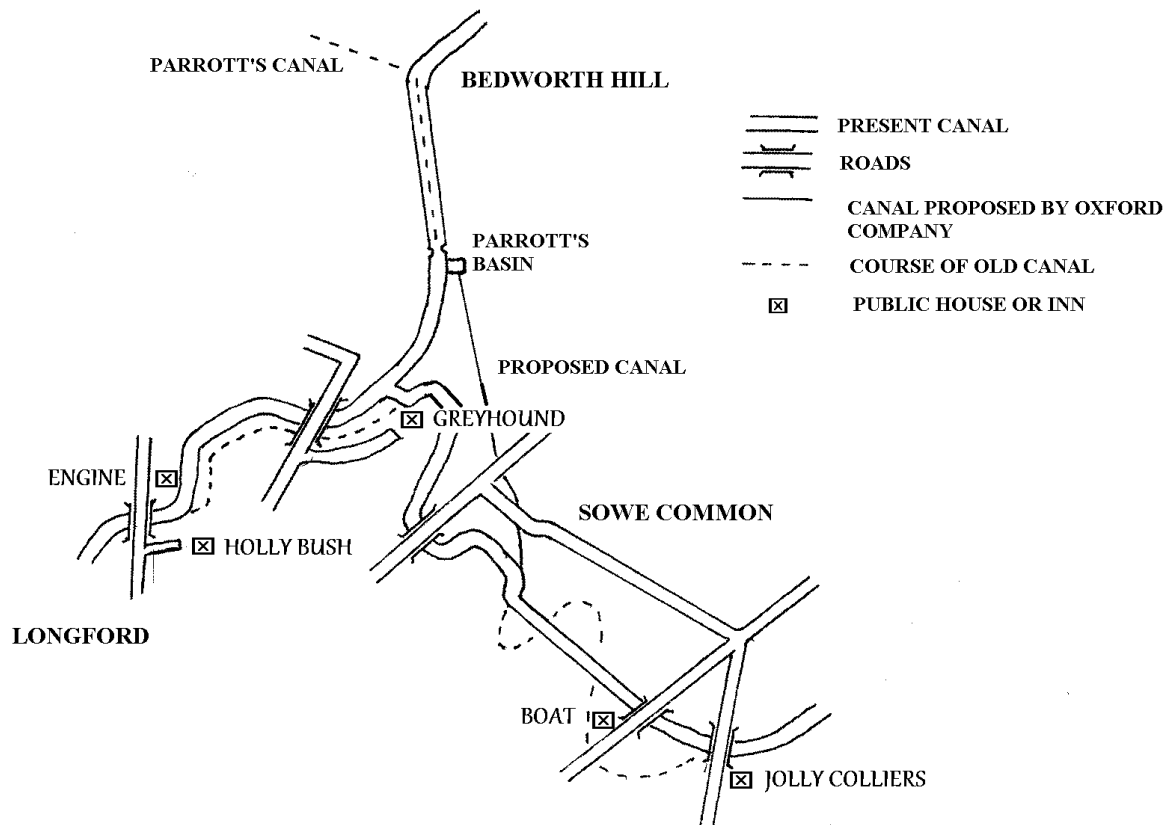


33. Canal Tavern, Leicester Row



34. Canals

THE CANALS AND PUBLIC HOUSES OF NORTH COVENTRY



35. Railway Inn, Lockhurst Lane



36. Sydenham Palace



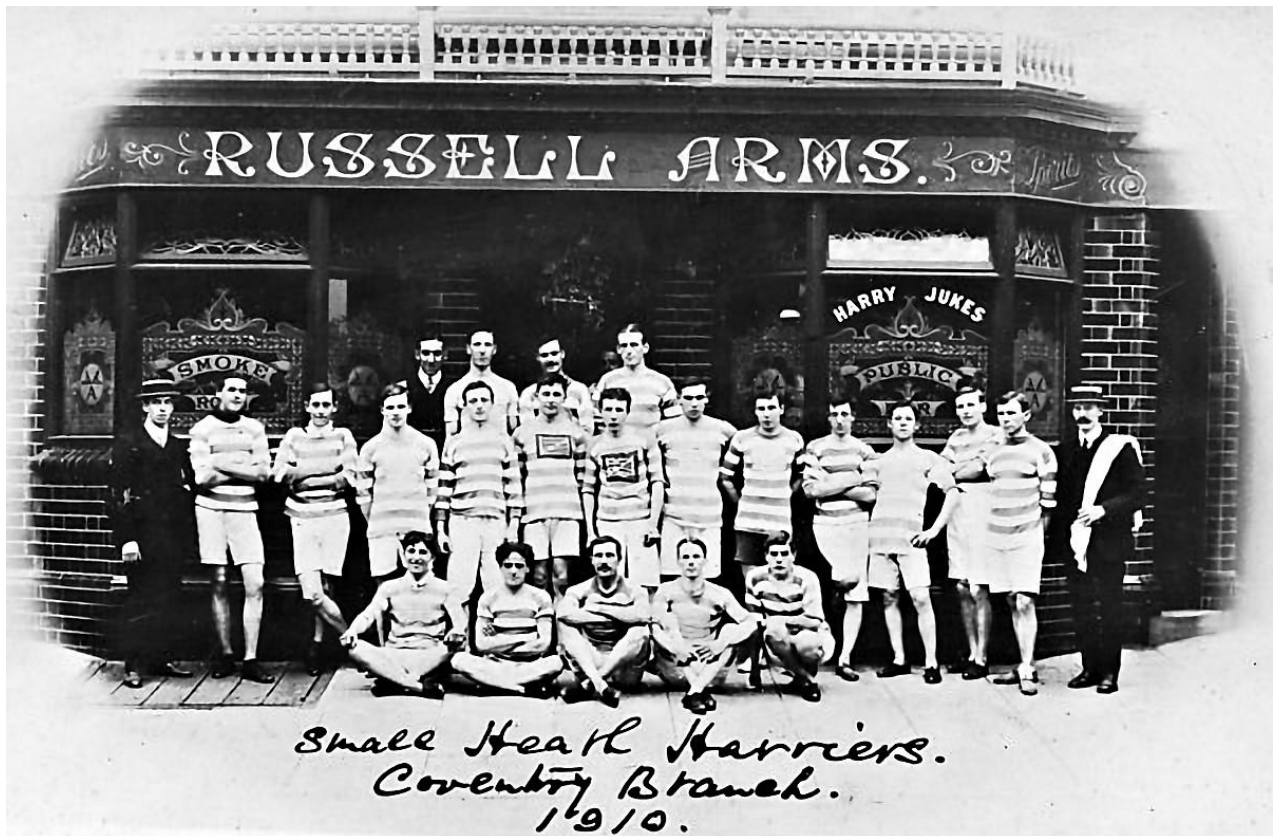
37. Craven Arms, 1856 Election



38. King's Head, 1856 Election



39. Small Heath Harriers at The Russell Arms



40. Bagatelle Table at the Humber Hotel



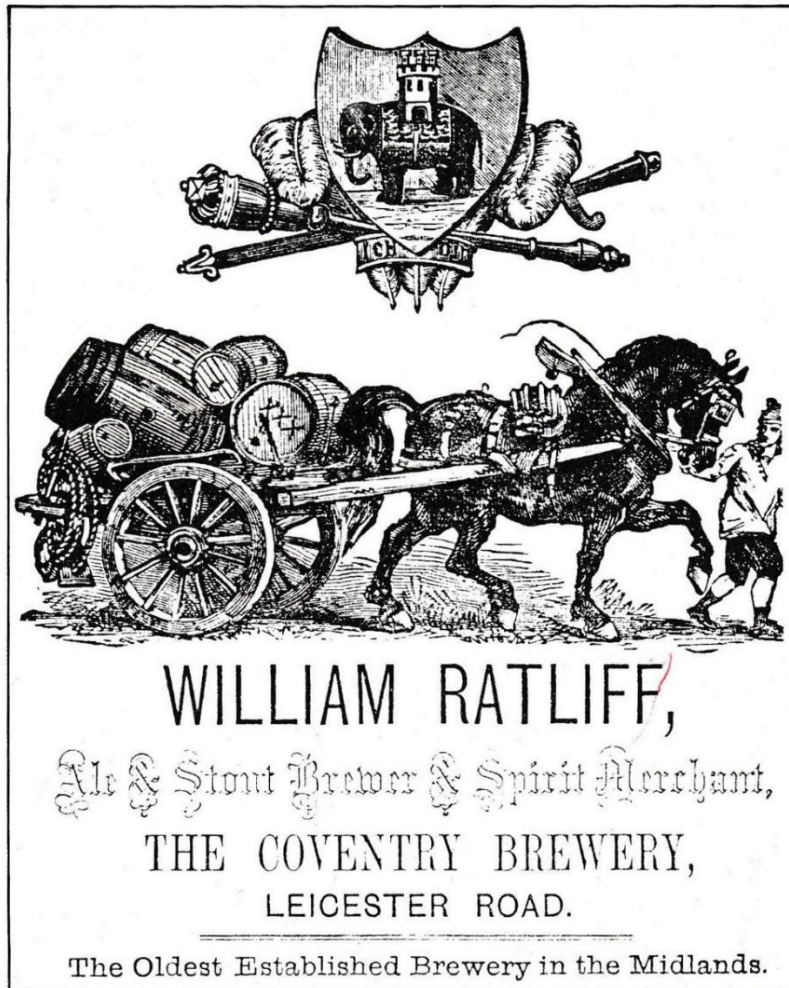
41. Britannia Music Hall



42. George Inn, Little Park Street



43. William Ratliff's Advertising



44. Phillips and Marriott's Drays Outside the Brewery, Alexander Day 1913



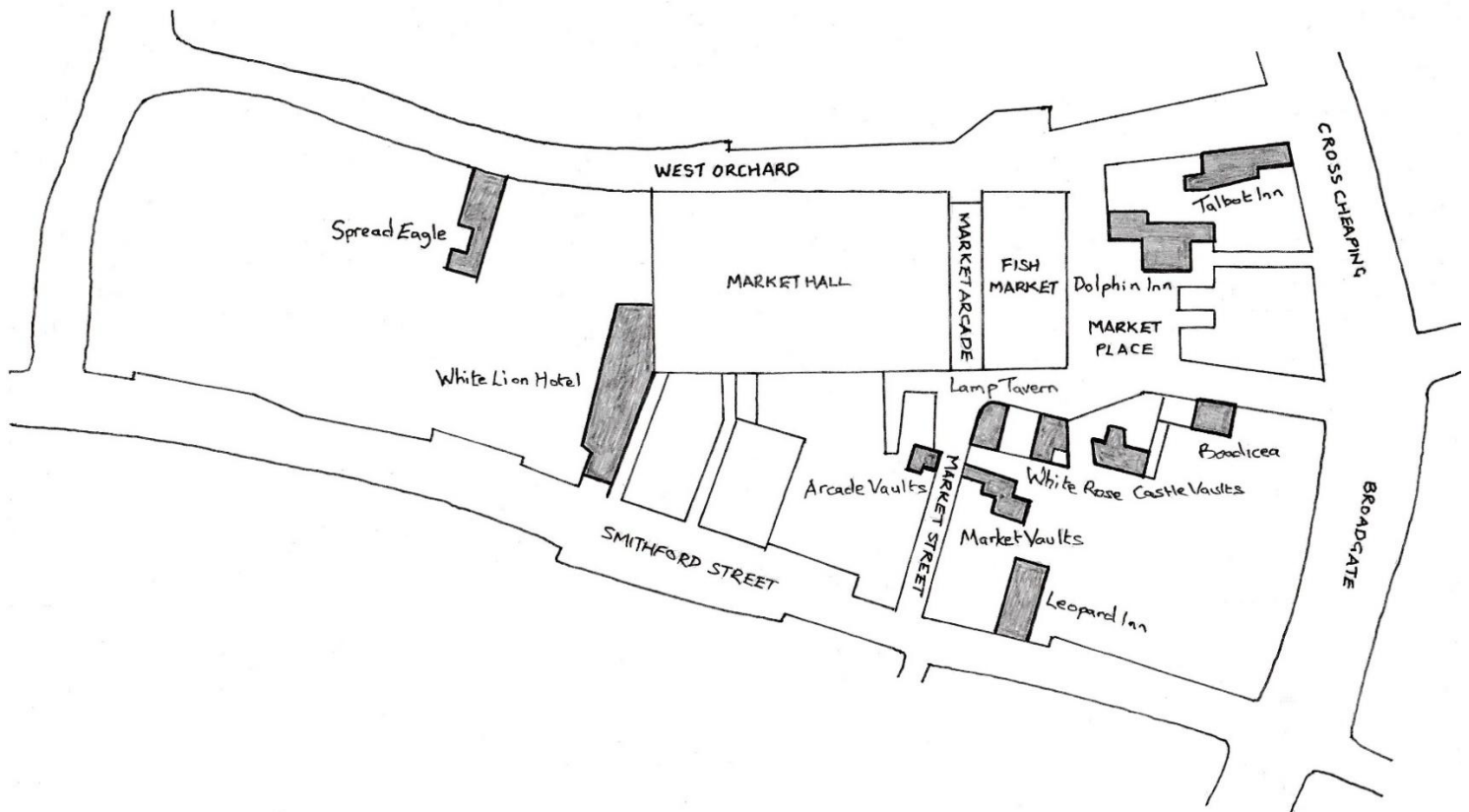
45. Phillips and Marriott Motor Dray



46. Old Brewery at the Old Windmill



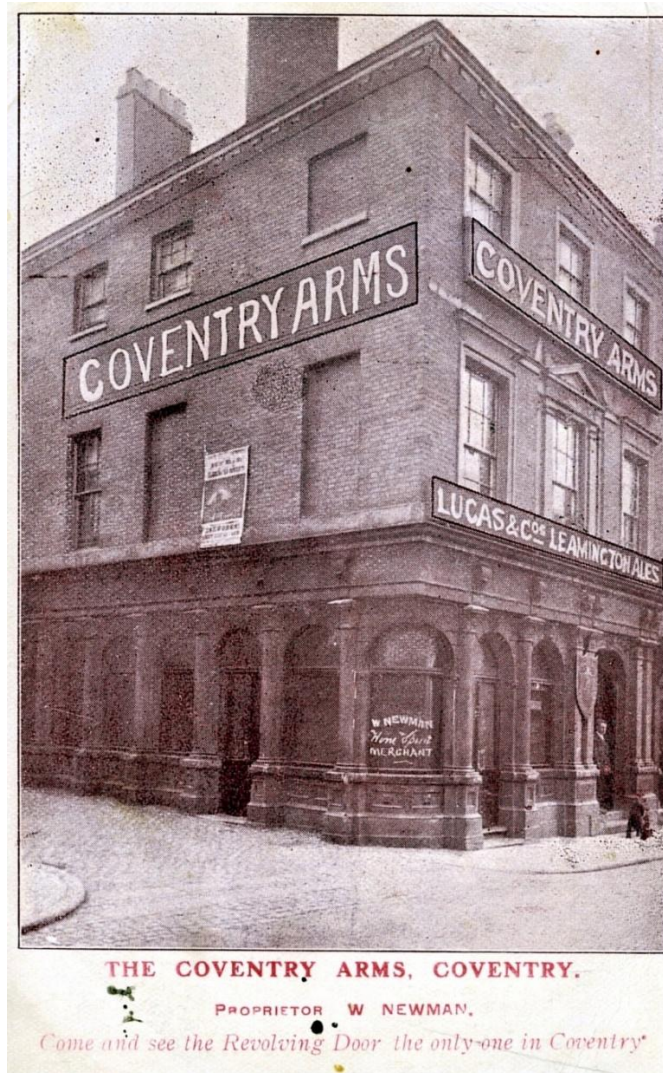
47. Market Area



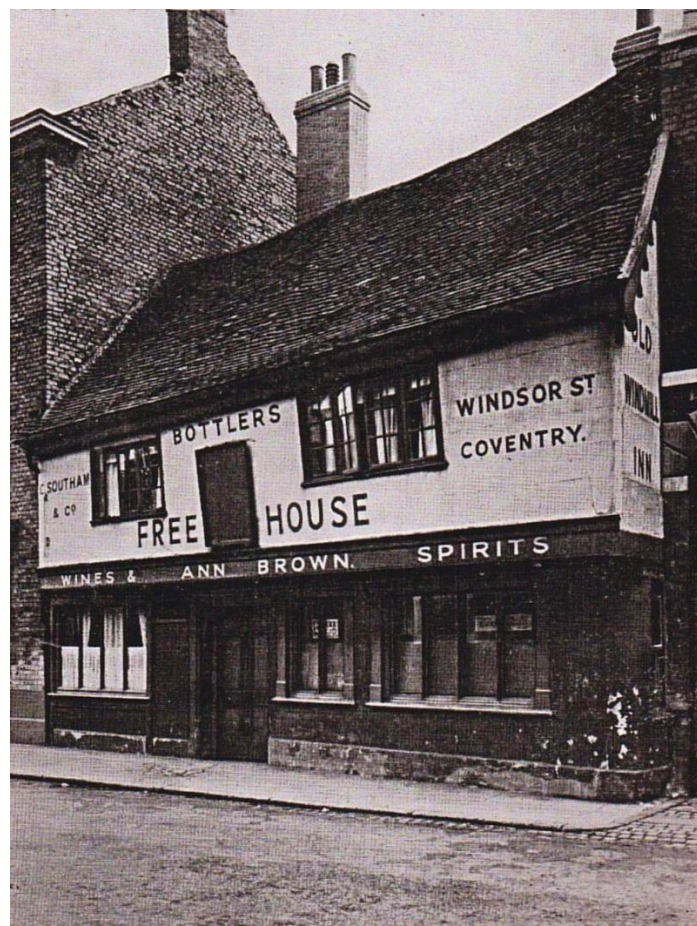
48. Wine Lodge after the Peace Riots



49. The Coventry Arms, Smithford Street, 1906



50. Old Windmill



51. Ethel and the Manageress of the Hare and Hounds, Far Gosford Street



52. Three Ladies at the Hare and Hounds, Far Gosford Street



53. Will in the Gosford Park Hotel, St. George's Road



54. City Arms, Earlsdon, and Ma Cooper



55. Lockhurst Tavern



56. Beer Gonzo



57. Hops D'Amour



58. Hops D'Amour Bar

